

[Cars & Trucks](#) ▾

[Parts & Accessories](#) ▾

[Motorcycles](#) ▾

[Powersports](#) ▾

[Boats](#) ▾

[Other Vehicles](#) ▾

[Back to home page](#) | Listed in category: [eBay Motors](#) > [Cars & Trucks](#) > [Jeep](#) > [Wrangler](#)

Bidding has ended on this item.

Item: 1987 Jeep Wrangler

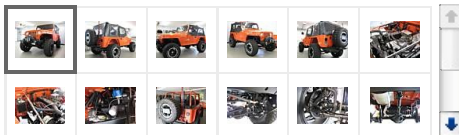
1987 Jeep Wrangler

Frame off, nut and bolt restoration done right... [Research 1987 Jeep Wrangler](#)



Zoom

Enlarge



Ended: Sep 29, 2009 18:00:56 PDT

Bid history: [23 bids](#)

Winning bid: **US \$12,500.00**

[Get low monthly payments](#)

Payment: Full payment required within 7 days of auction close.

Shipping: Buyer responsible for vehicle pick-up or shipping.
[Vehicle shipping quote is available.](#)

Item Location: Medina, Minnesota, United States

Seller info

[jeepnfish](#) (11 ★)

100% Positive feedback

[Ask a question](#)

[Save this seller](#)

[See other items](#)

Other item info

Item number: 130332808859

Item condition: Used

Sells to: United States

This vehicle is eligible for up to **\$50,000** in [Vehicle Purchase Protection](#)

[Share](#) ▾

[Print](#)

[Report item](#)

[Description](#)

[History Report](#)

[Shipping](#)

[Payment](#)

[Before You Buy](#)

[Print](#)

1987 Jeep Wrangler

Title:	Frame off, nut and bolt restoration done right...
Mileage:	361 miles
Location:	Medina, Minnesota
Vehicle Information	
VIN:	2BCCL811XHB516386 See the free Vehicle History Report
Inspection:	Order an independent inspection
Warranty:	No

Vehicle title:	Clear		
Condition:	Used		
For sale by:	Private seller		
Features			
Body type:	SUV	Engine:	6 Cylinder
Transmission:	Manual	Fuel type:	Gasoline
Disability equipped:	--		
Options			
Convertible	4-Wheel drive	CD player	

1987 jeep wrangler

Engine: 4.2 liter, inline 6 cylinders, rebuilt motor with receipts, Weber carb, and HEI distributor. New exhaust system 2" with S.S. tip. New radiator, alternator, starter, fuel pump. Pretty much everything is new.

Transmission: AX-15, Rebuilt with all new syncrows, nice and tight and shifts smooth. New clutch with master cylinder, S.S. flex line.

Transfer case: NP 231, with Advanced Adaptors slip yoke eliminator kit. Transfer case was taken apart and gone through before reassembly.

Front axle: Dana high pinion 30, 4.10 gears, Lock-right locker, all new bearings, brakes, 4x4 Posi-Lok cable to engage front axle.

Rear Axle: Dana 35, 4.10 gears, Aussie locker, all new brakes and parking brake cables, I did buy the rear axle with 500 miles on it and re did the rear brakes. The person said he went through it and put 500 miles on it except the brakes, so I did redo them.

Drive shafts: Front shaft is a new 2" shaft. Rear is a new CV style shaft.

Suspension: 3.5 "Black diamond, M.O.R.E. shackle reversal kit, rear Currie shackles, all bolts are greaseable, with polyurethane bushings.

Brakes: New power booster and master, proportioning valve, stainless steel hard lines and flexible lines. New parking brake cables. Dot 5 brake fluid.

Steering: Rebuilt tilt steering column, new steering shaft, M.O.R.E. steering box brace. Only thing not new is the steering gear box itself. New hoses.

Gas tank: was new when I bought the jeep and left it alone. I did buy all new straps to hold it to the skid plate. Had skid plate sand blasted and repainted.

Rims & Tires: 17x9 Incubus alloys, style 511. Mickey Thompson MTZ 315/70/17 Mud Terrains.

Bumpers: front bumper is a rock crawler with D-rings. Gorilla 10,000# winch, with a Warn winch cover. Set up for tow bar (comes with it). The rear bumper/ tire carrier was built by a friend of mine and has a High lift jack mount.

I started out with a bare frame and had it sandblasted and chassis painted. And started to assembly the rolling chassis.

The body was completely taken apart and sandblasted and repainted. I put new polyuthrane 1" body mount kit in it. All new hardware was used in reassembly. Stainless steel hinges and bolts through out. I bought a roll bar out of 92-95 jeep so I had rear shoulder seat belts. I bought tube fenders front and rear. Gen-right rocker guards, corner guards, body tub plates, then painted everything to match. Race Ace hood louvers and painted to match

I installed all new seat belts, front seats, center console. I reused the back seat. I repainted the dash and plastic parts. I had all the gauges recalibrated and checked. All gauges work. The heater blower motor was upgraded to a new style with more power. I went through the complete electric system. Everything works. New weather striping: door seals, tailgate seal, cowl seal. New door handles both interior and exterior.

I installed ORO light Dot taillights and License Plate light and mount plate. New headlight buckets in the grill with new adjusters.

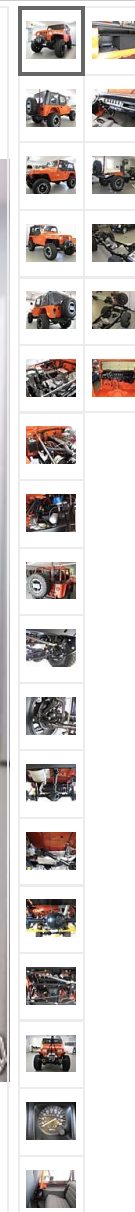
Every nut and bolt has been turned on this jeep.

Stereo system: Alpine Receiver, Pioneer 4x6 dash speakers, pioneer 6x9 rear speakers with VDP sound wedges, Sony amp, Alpine 12" subwoofer. I believe a Monster wire install kit. It is loud and clear going down the road.

Soft top: Bestop super top with no tears, good windows, all zippers are there and work.

Any questions please feel free to ask. I have well over \$17,000 into and would like to get all my money back but you never do on build like this. My reserve price is under the teens. I have owned the jeep for a few years and it was kept up north at our cabin. I decided to make some improvements on it and ended up with a complete ground up restoration.

Contact Paul at 612-791-2909



1 **NEVER** pay for a vehicle by instant cash transfer, such as Western Union or Moneygram.

2 **ALWAYS** check the My Messages section in your My eBay page to confirm any emails from us requesting account information.

3 **GET** a vehicle history report before purchasing a used car (1981 or later).

4 **BEWARE** of fraudsters who send fake email messages claiming to represent or offer escrow services as part of eBay's Vehicle Purchase Protection program.

Be safe - get all the tips

02235

Seller assumes all responsibility for this listing.

[Back to home page](#) | [Report this item](#) | [Printer version](#) | [Sell one like this](#)

[Return to top](#)

[About eBay](#) | [Community](#) | [Security Center](#) | [eBay Toolbar](#) | [Buyer Services](#) | [Policies](#) | [Government Relations](#) | [Site Map](#) | [Help](#)

© 1995-2009 [eBay Inc.](#) All Rights Reserved. eBay and the eBay logo are among the registered trademarks of eBay Inc. Kelley Blue Book® and Blue Book® are registered trademarks of Kelley Blue Book Co., Inc. Other trademarks and brands are the property of their respective owners. Some automotive images © eVox Productions LLC, all rights reserved. Use of this Web site constitutes acceptance of the eBay [User Agreement](#) and [Privacy Policy](#).